

Customer :

customer

Customer part :

customer part

Comment :

Comment

S1=7.61

S2=93.98

Tmax=428

Tp S2=467.0

PI=0.07

HI=555

Sample =755.75

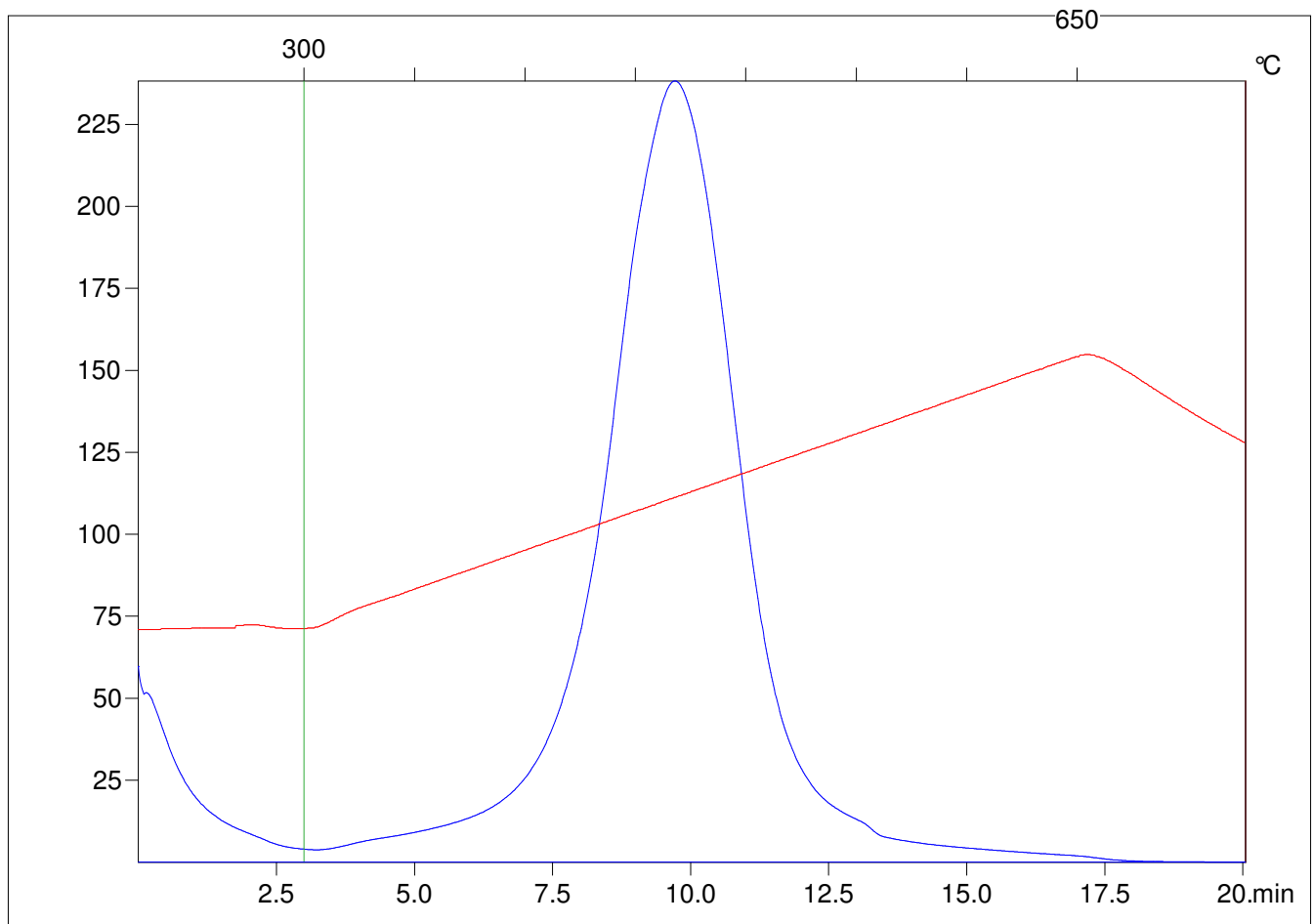
Method =Bulk Rock

Cycle=Basic

KFID(10*9)=1550

Qty =70.0

TOC=16.93



C:\VINC\PK130315\PK008.R00 : FID pyrolysis graphic

State

Pyro Status

Oxi Status